



PT GEO ANFA SPASIAL

HIGH PRECISION MAPPING SOLUTIONS

COMPANY PROFILE

2026 EDITION



ABOUT US

Your trusted geospatial technology partner based in Sleman, DIY. We are dedicated to being a reliable, fast, and scalable provider of WebGIS, Geoportal, Digital Twin City, and spatial data management services.

We design fully customized 2D and 3D systems, up to comprehensive Digital Twin City platforms. From highly lightweight and efficient Non-GeoServer architectures to enterprise-scale OGC-standard infrastructures using GeoServer. We transform complex spatial data into interactive visualizations for decision-makers.

CORE SERVICES

WebGIS Development



Building custom, independent, and responsive mapping platforms. Focused on functionality without overloading your server architecture.

Spatial Data Integration



Advanced processing: Aerial Photography, LiDAR & TLS, 3D WebGIS, Orthophoto, Point Clouds, and 3D Gaussian Splatting.

LEGAL INFORMATION



NIB (BUSINESS REG)

2404260126307



NPWP (TAX ID)

1000000009388501

TRUSTED BY



Bojonegoro
Regency



Ngawi Regency



Trasan Village,
Klaten



Karangwuni Village



PT JIEP Industrial
Area



PT Sapta Sentosa
Jaya Abadi

STRUCTURED WORKFLOW

1

CONSULTATION & ANALYSIS

Discussing specific business logic, target users, and functionalities.

2

DATA PROCESSING

Structuring, normalizing, and optimizing raw data (SHP, GeoJSON, TIFF).

3

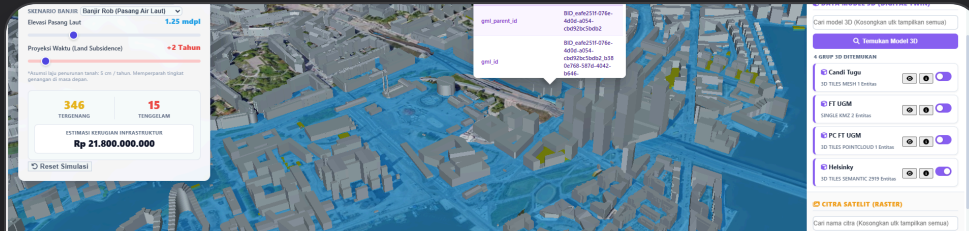
SYSTEM DEVELOPMENT

Building 2D/3D interfaces, backends, and OGC standard integrations.

4

IMPLEMENTATION & RELEASE

Server deployment, security finalization, and documentation handover.



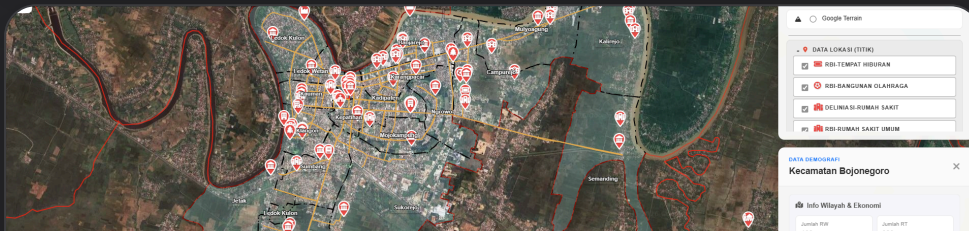
Digital Twin City

State-of-the-art Digital Twin prototype combining CityGML/CityJSON spatial data with 3D Tiles technology (photogrammetry and point clouds) and per-unit 3D building model integration (GLB/KMZ). Designed for immersive simulation, urban asset monitoring, and advanced spatial analysis.



Geoportal & WebGIS (GeoServer)

Enterprise-class Geoportal WebGIS fully implementing OGC standards (WMS/WFS/WCS). Specifically designed for massive spatial data management, time-series raster processing, and real-time, centralized, secure data interoperability between agencies.



Integrated District WebGIS

Enterprise-level GIS for the Bojonegoro District. Comprehensively integrates the Regency's strategic programs with population, infrastructure, and regional potential databases to support precise governance.



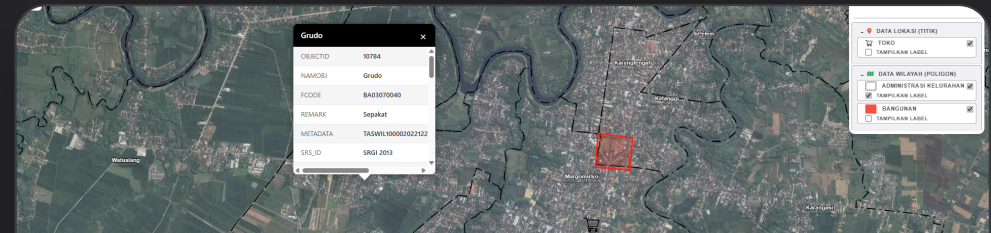
Smart Plantation WebGIS

Comprehensive geospatial portal for optimizing precision agriculture management. Features automated GeoJSON import, advanced user access hierarchies, and visual field photo documentation per block for remote monitoring.



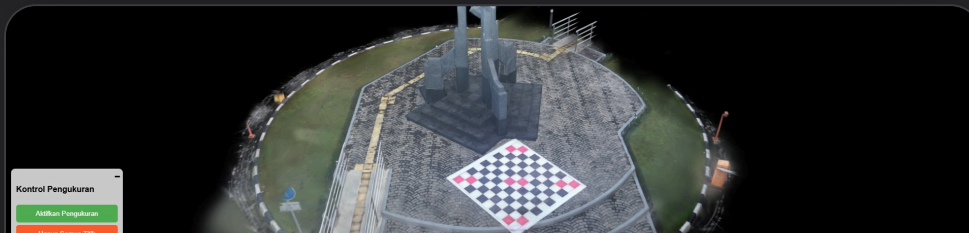
Integrated Village WebGIS

Integrated Smart Village platform combining geospatial data management (land parcels, infrastructure, population) with a dynamic digital administration system. Features a Master Template Engine for automated, paperless citizen correspondence.



Ngawi WebGIS (Non-Geoserver)

Interactive GIS designed with a highly lightweight and efficient Non-Geoserver architecture. Offers high-speed access and minimal server resource consumption while delivering complete analytical mapping functionality.



3D GS: Engineering Monument UGM

Demonstration of cutting-edge spatial rendering using 3D Gaussian Splatting. Visualizes the Faculty of Engineering Monument with photorealistic detail, representing the future of real-world object reconstruction in a lightweight web format.



3D GS: Tugu Temple Semarang

Modeling of the historic Tugu Temple site using advanced 3D Gaussian Splatting. Produces a highly interactive digital replica ideal for cultural heritage preservation, virtual tourism, and documentation.



3D GS: Watu Tugu Semarang

High-precision 3D visualization of the Watu Tugu site. Utilizes Gaussian Splatting to accurately capture material textures, geometry, and lighting, served instantly via browser without plugins.



Infrastructure Monitoring

Innovative digital mapping platform for collaboratively reporting and monitoring infrastructure damage. Facilitates citizen participation and rapid agency response with actual location tracking, work status, and field documentation.



Modern 3D WebGIS

Revolutionary 3D topographic and building layout visualization using self-hosted WebGL technology. Operates fully on local servers without third-party cloud reliance, ensuring data sovereignty and super-smooth rendering.



Lusi Asset Management

Specialized geospatial system for asset inventory and monitoring in the Sidoarjo Mud (Lusi) affected area. Provides precise visualization of locations, citizen asset compensation status, and land cover changes for mitigation policies.

INVESTMENT & PRICING PLANS

NON-GEOSERVER WEBGIS

Rp 15 Million+

Base Price (Basic System)

- ✓ Lightweight WebGIS mapping architecture
- ✓ Custom adjustment for complex requests
- ✓ Excludes Web Hosting & VAT

MOST POPULAR

GEOPORTAL (OGC STD)

Rp 45 Million+

Base Price (Basic System)

- ✓ GeoServer backend integration
- ✓ WMS/WFS International standards
- ✓ Excludes VPS Server & VAT

ADVANCED

DIGITAL TWIN CITY

Rp 65 Million+

Base Price (Basic System)

- ✓ 3D environment & advanced mapping
- ✓ Powered by GeoServer & 3D libraries
- ✓ Excludes VPS Server & VAT

CUSTOM SOLUTION

Flexible

According to scale & needs

- ✓ 100% architecture matches business logic
- ✓ Specific module development
- ✓ Price calculated based on complexity

CORE TEAM PROFILES



Azfa Ahmad Dzulvikar
DIRECTOR & LEAD WEBGIS DEVELOPER

- Ph.D. Candidate in Geomatics, UGM
- M.Eng. in Geomatics, UGM
- B.Eng. in Geodesy, UNDIP

I hold a Master's degree from UGM and a Bachelor's from UNDIP. With a deep understanding of geospatial science, my focus is on delivering high-quality spatial solutions customized to your business logic.

CORE COMPETENCIES:

- > Custom WebGIS & Geoportals 2D/3D
- > OGC (WMS/WFS) / Non-OGC Implementation
- > Standalone 3D Solutions (Gaussian Splatting)
- > Geospatial Infrastructure Consulting



Anggi Farah Aushaf
SALES ENGINEER

- B.Eng. in Geodesy, UNDIP
- Marketing & Operations
- Professional Communicator

Combining a technical background in geospatial science with a strong foundation in marketing, I specialize in translating WebGIS capabilities into clear and actionable business value.

CORE COMPETENCIES:

- > Technical & Architectural Consulting
- > Marketing & Strategic Business Growth
- > Professional Communication & Public Speaking
- > Client Relations & Project Transparency

FREE CONSULTATION

Ready to Build Your Spatial Infrastructure?

Don't let your data just sit on a hard drive. Discuss your WebGIS or Geoportal needs with us today.



WHATSAPP (FAST RESPONSE)

+62 857 9657 7160



OFFICIAL EMAIL


geoanfaspasial@gmail.com



WEBSITE (LEARN MORE)

geoanfaspasial.com



 OFFICIAL LEGAL ENTITY

Limited Liability Company (PT)

BUSINESS REGISTRATION NUMBER (NIB)

2404260126307

CORPORATE TAX ID (NPWP)

1000000009388501

LEGALLY REGISTERED WITH THE MINISTRY OF LAW & HUMAN RIGHTS